



TRIAX CR 310, CR 320, STR 330

Software upgrade

Guide



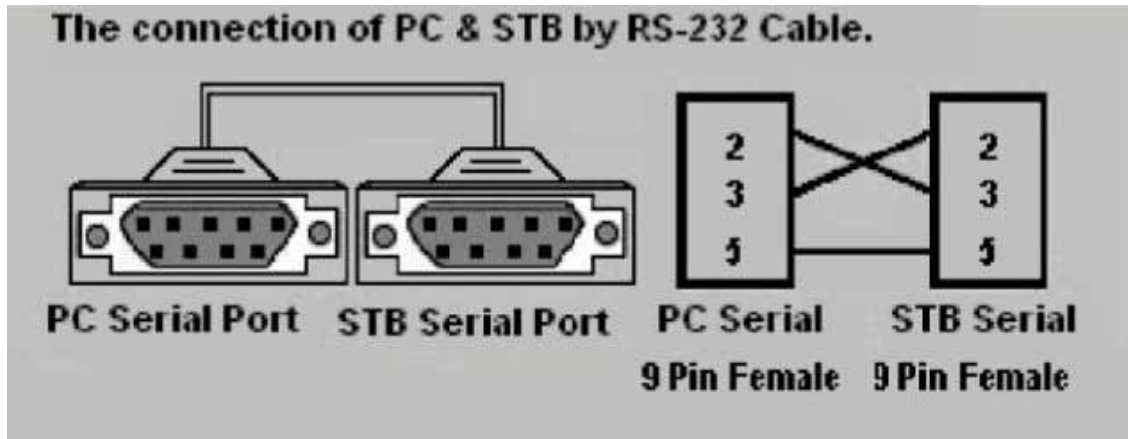
TRIAX - your ultimate connection

Software upgrade by PC for Triax CR 310, CR 320 , STR 330

1. Equipment to prepared

- ➔ PC (must have COM1 or COM2 port),
- ➔ RS-232 Cable (Triax P/N: 300763)

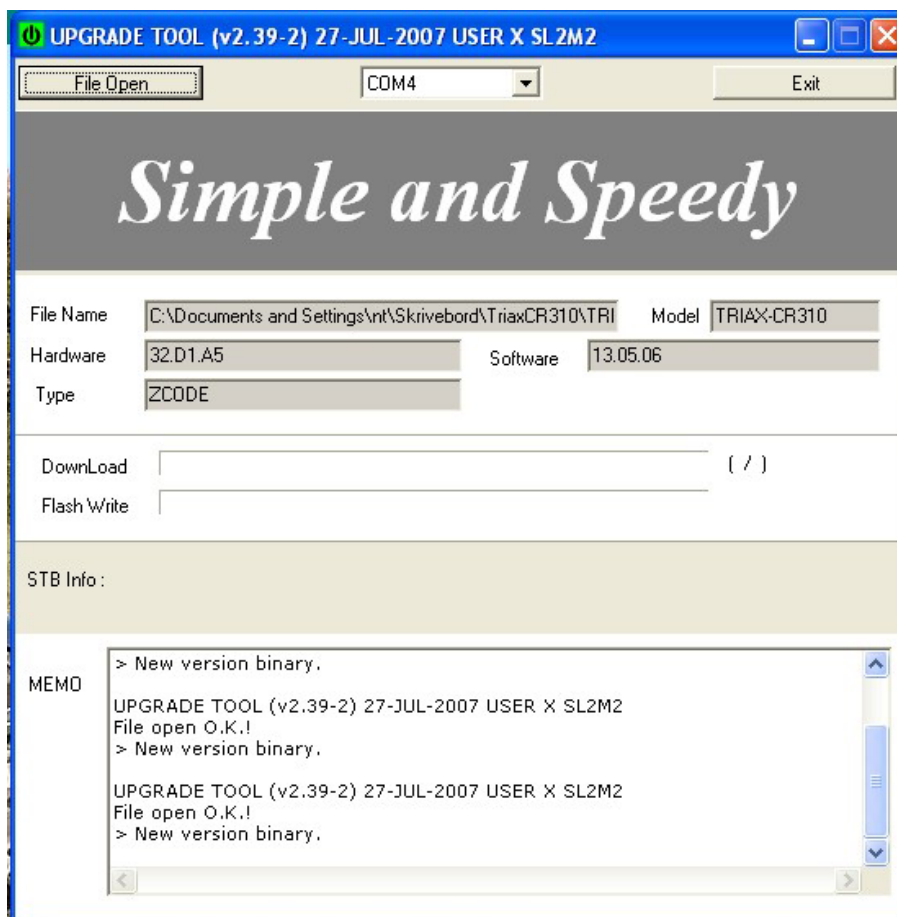
The RS-232 cable connection is described below.



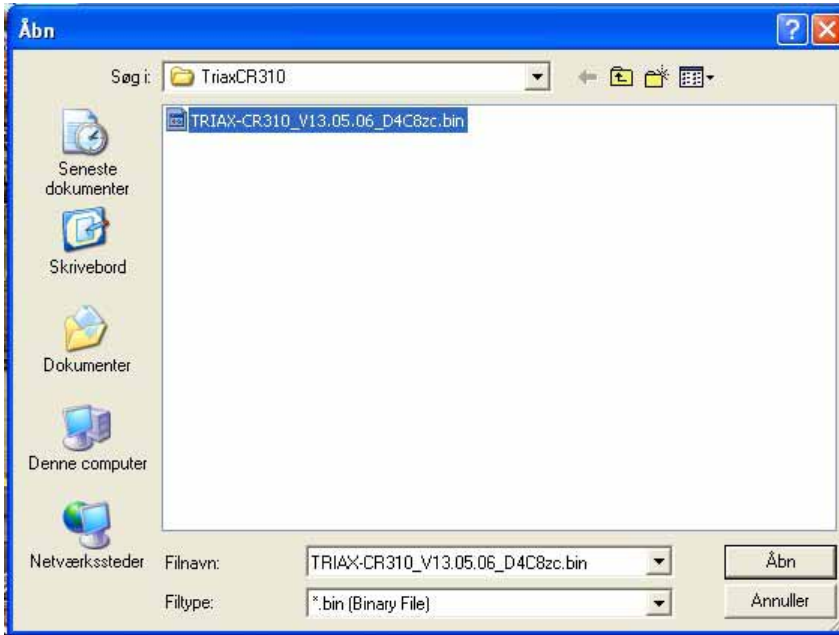
2. Power off the STB to be upgraded.

3. Connect your PC COM1, or COM2 port with STB by RS-232 serial cable.

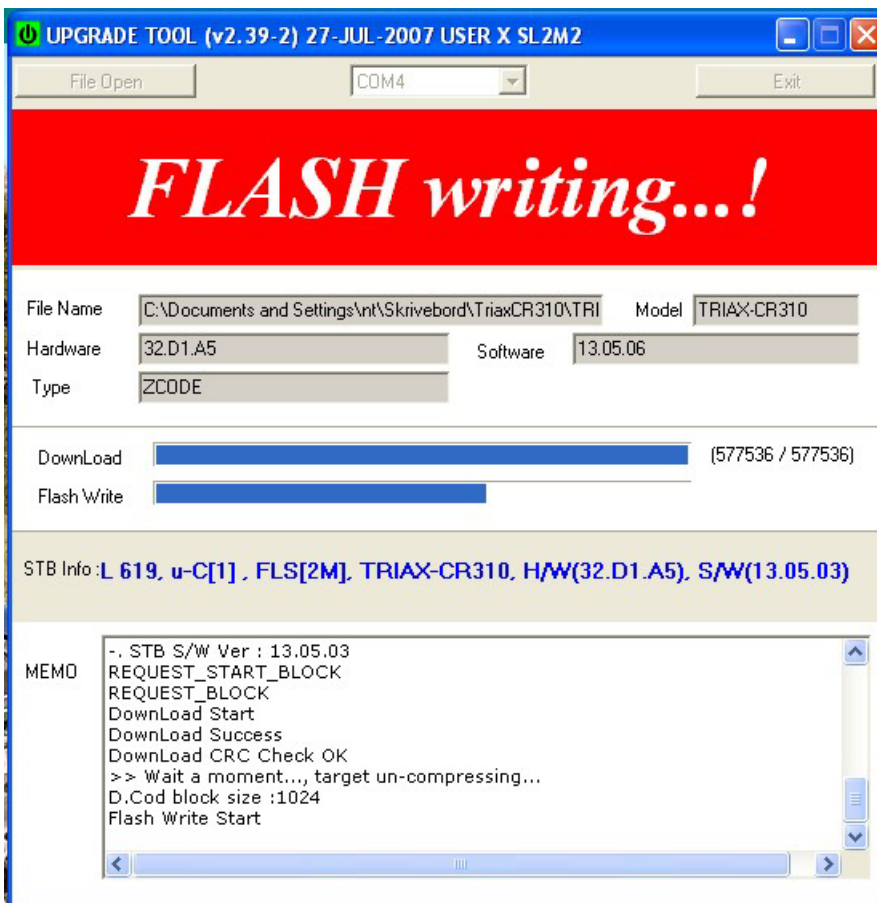
4. Execute the PC program “KUP239_2User.exe”



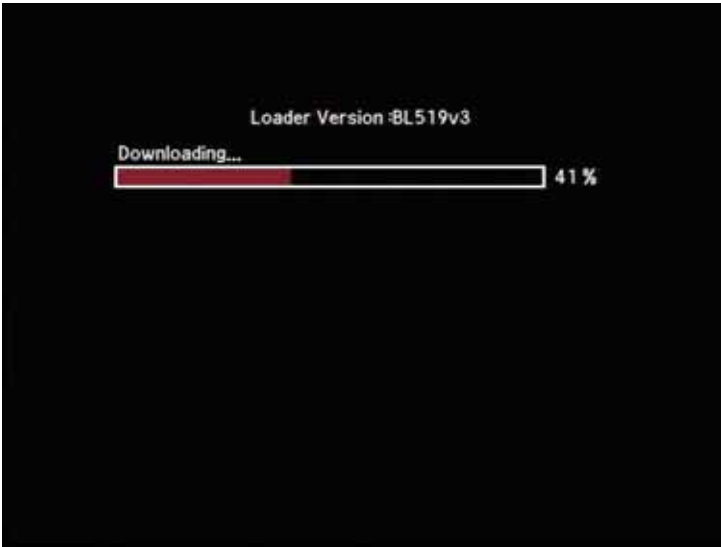
→ Press **File Open** and select the software file, e.g. “Triax-CR310_V13.05.06_D4C8zc.bin” and press **Open**.



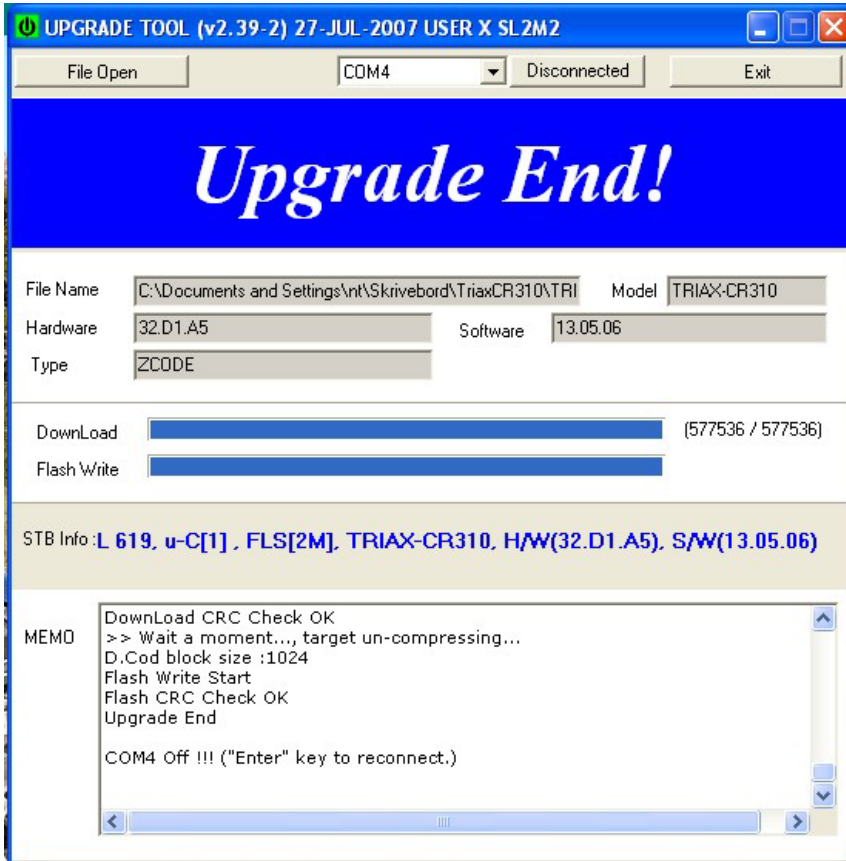
5. Power on the STB, then STB and PC process upgrading automatically.



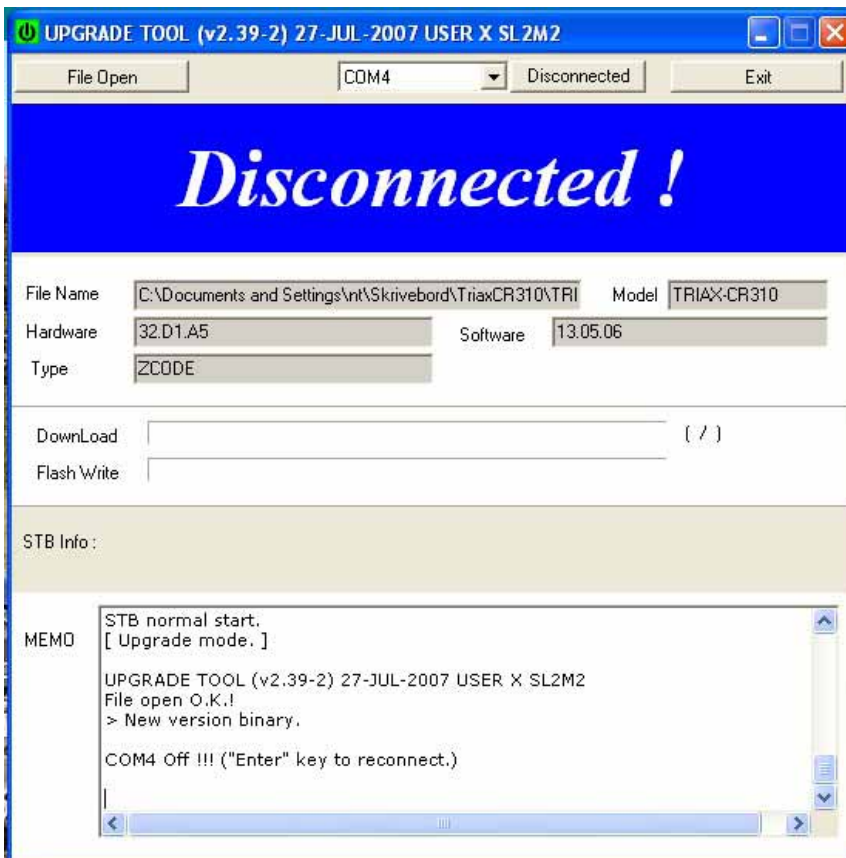
6. If no action at all, then please terminate “KUP239_2User.exe”, and retry from step 2 to step 5.



If the box is connected to a TV set the following screens will appear on the TV while downloading the software.



End of upgrade



Press **Disconnected** if you want to do a new upgrade.

Press **Exit** to stop.



www.triax.dk

2-2008 A



TRIAX - your ultimate connection